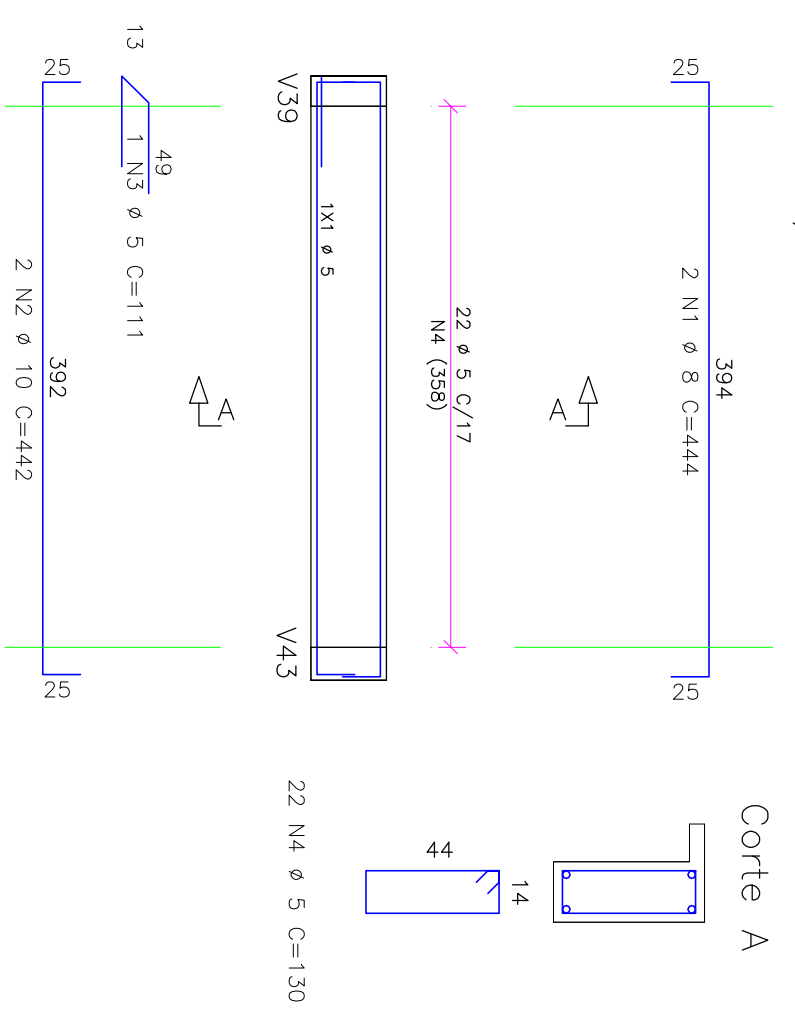
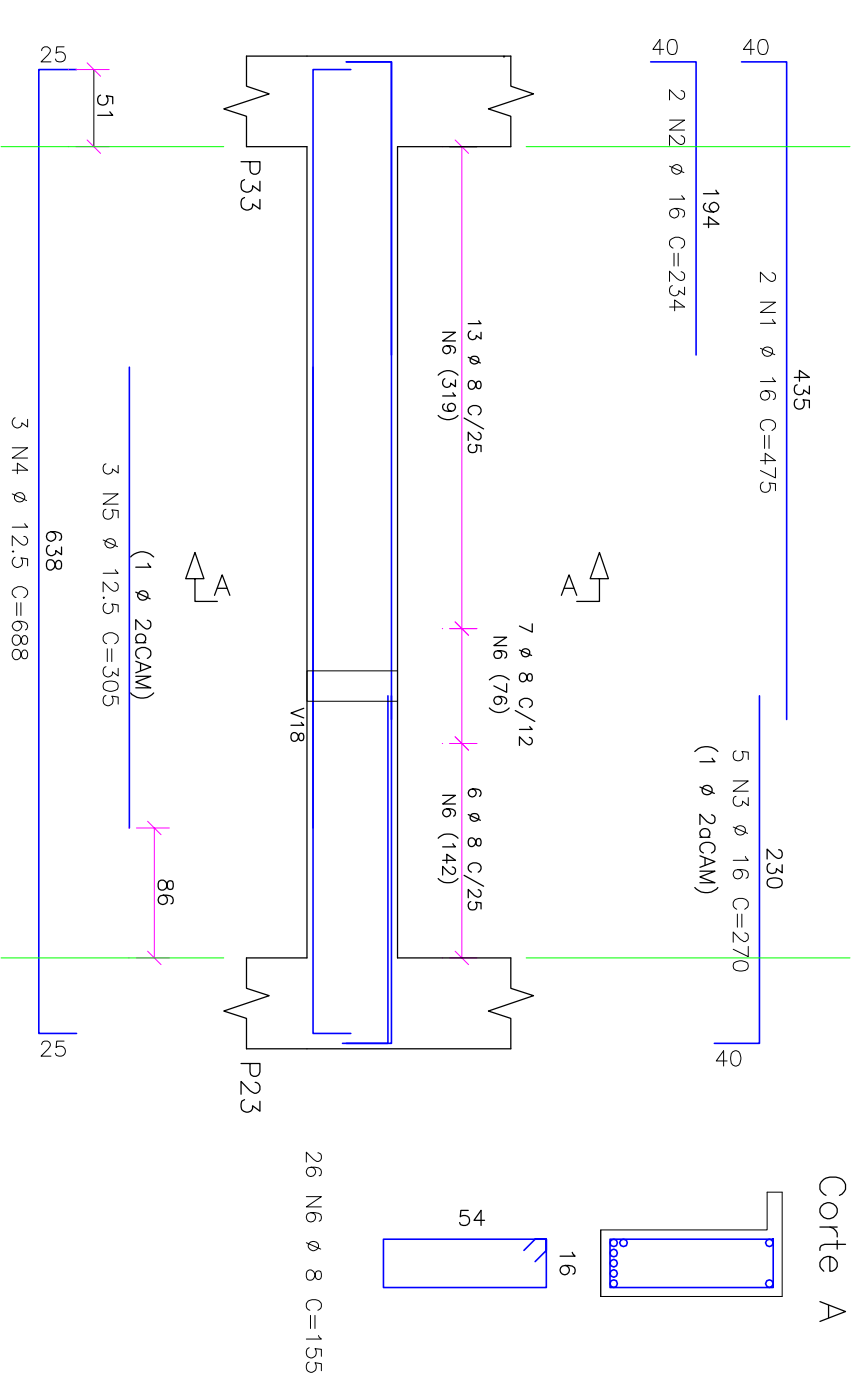


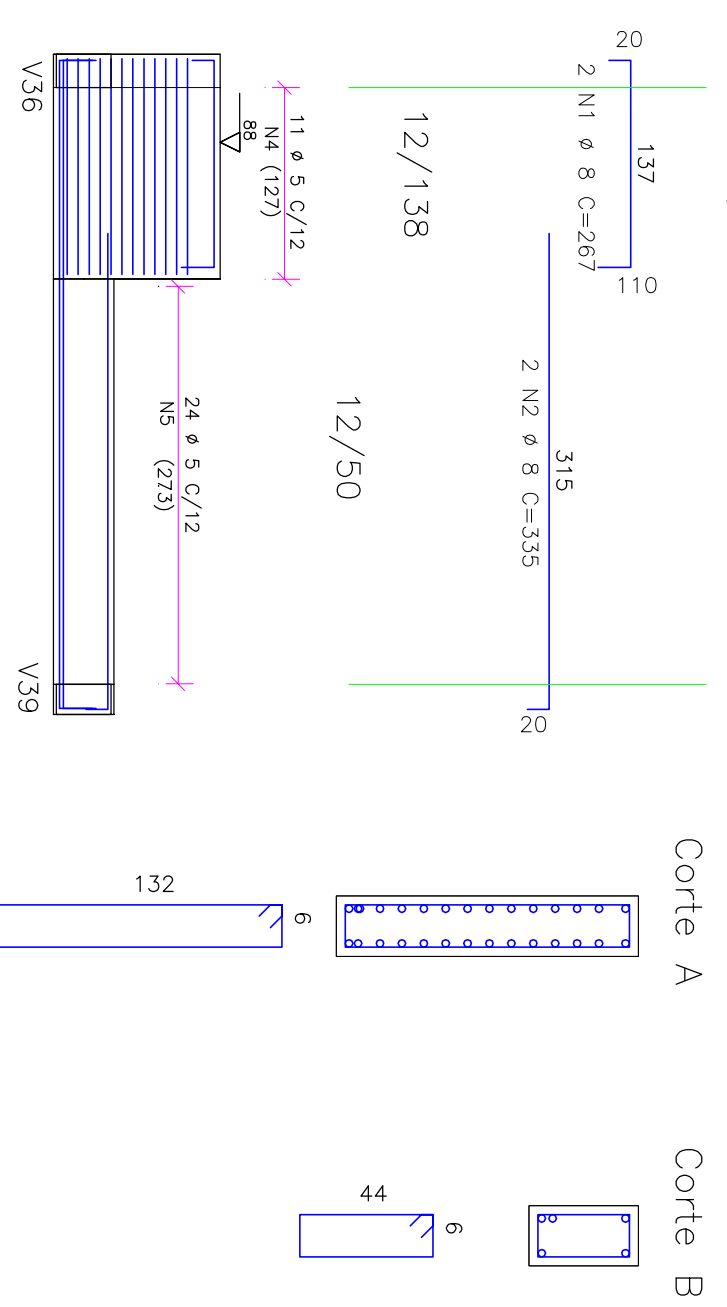
V26/V55 20/50



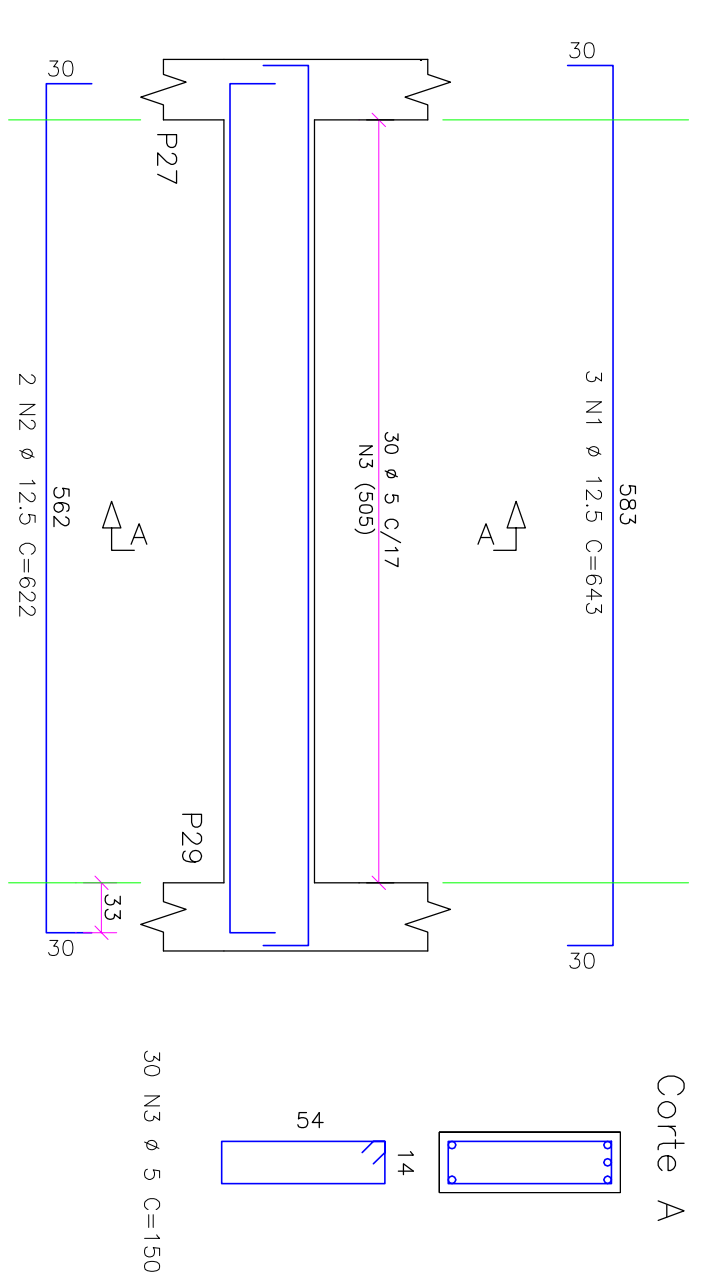
V5/V34 22/50



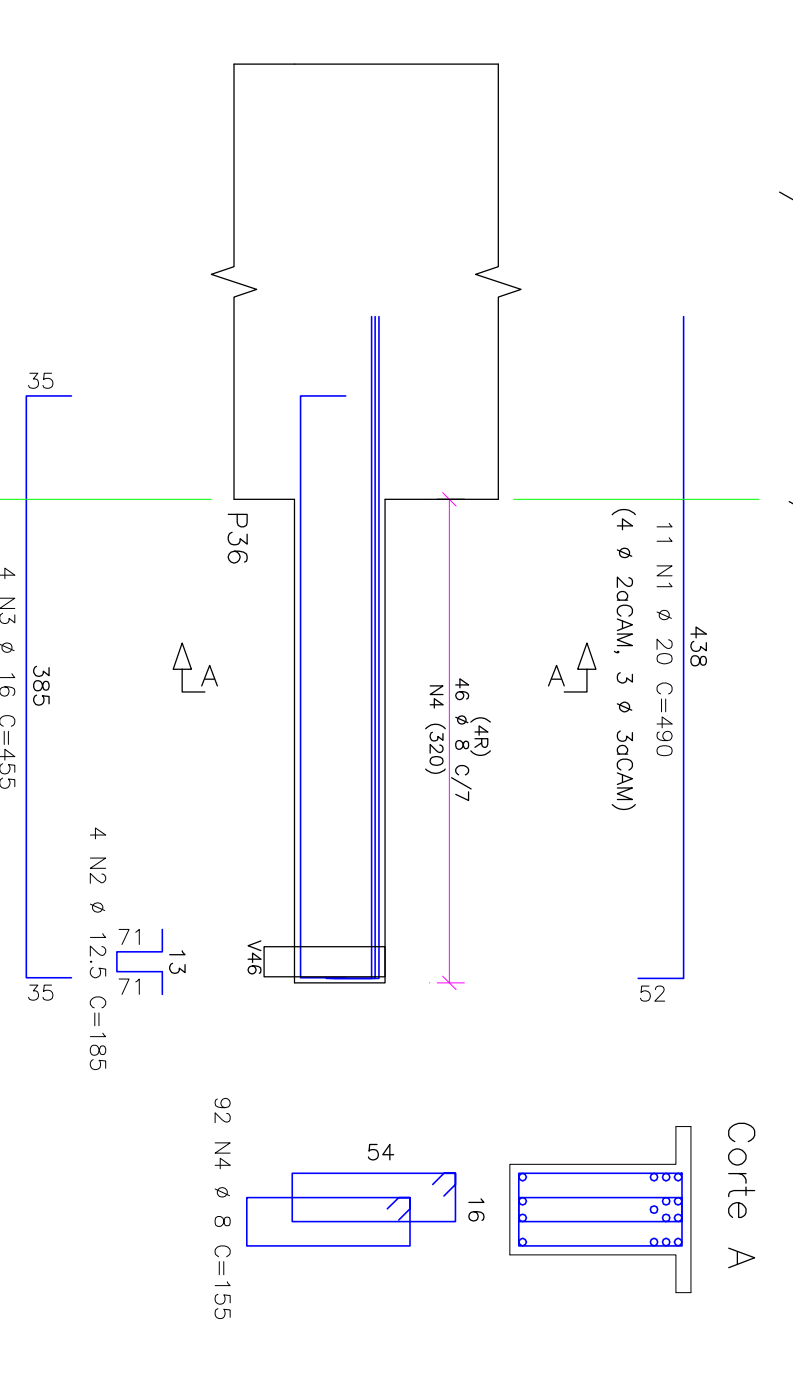
V19/V48 2X



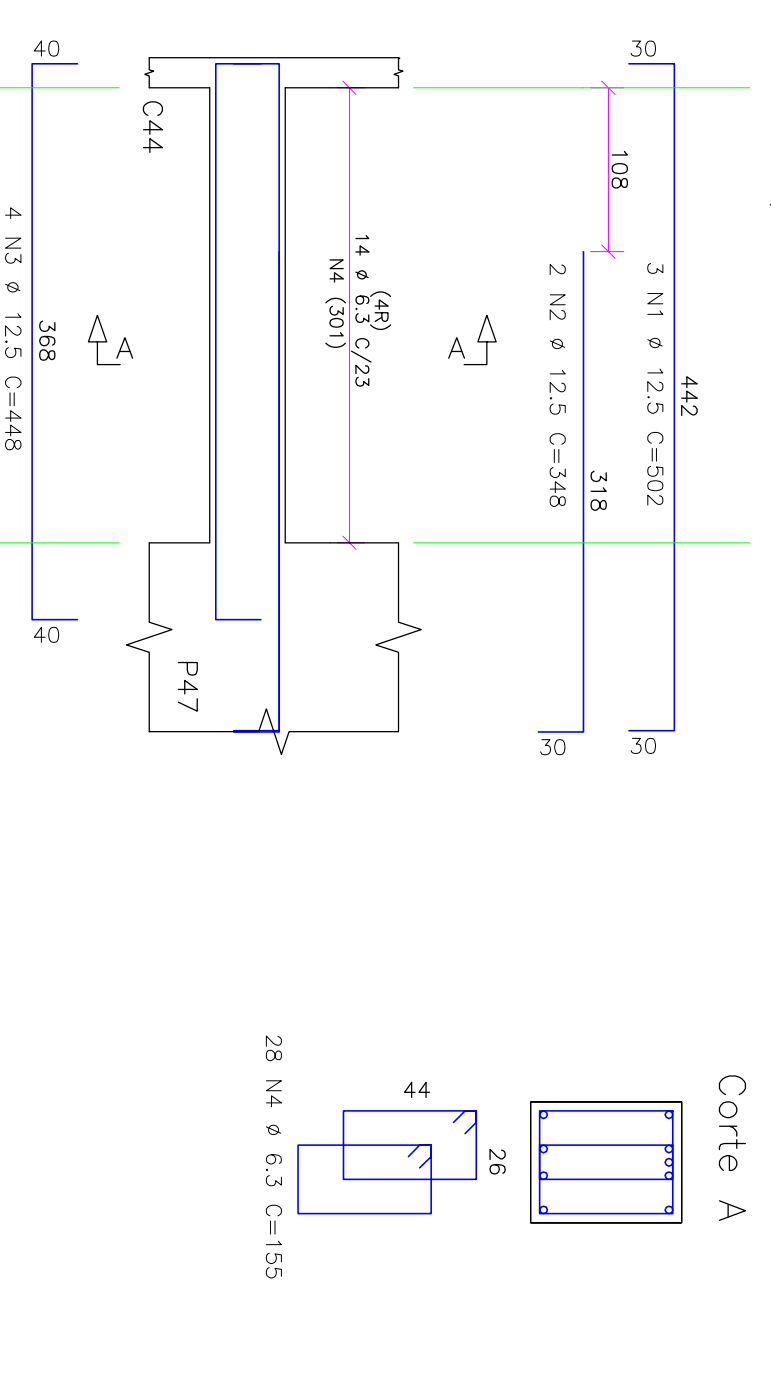
V21/V49 20/60



V24/V53 30/60



V28/V57 45/50



ACO	POS	BIT	QUANT	COMPRIMENTO	TOTAL
		(mm)		(cm)	(cm)
V1/V30	(X2)	16	4	848	3392
50	3	16	4	498	1992
50	4	16	6	330	1980
50	4	16	2	230	590
50	4	16	2	230	590
50	7	16	6	678	4068
50	8	16	4	165	1950
50	9	16	100	595	19500
50	11	16	8	111	10720
V7/V36	(X2)	16	4	781	3124
50	2	16	6	259	1036
50	4	16	6	757	4542
50	5	16	72	135	9720
V10/V39	(X2)	13,5	4	454	1816
50	2	20	6	605	4840
50	3	20	6	505	5030
50	4	16	6	359	2310
50	6	16	6	406	2436
50	6	16	130	130	12220
50	7	16	94	130	12220
50	7	16	297	130	2376
V11/V40	(X2)	10	4	555	2212
50	3	16	4	405	2430
50	4	12,5	4	1006	4024
50	5	12,5	2	580	1160
50	6	12,5	109	130	14360
V21/V49	(X2)	12,5	6	643	3858
50	2	12,5	4	622	2488
50	3	5	60	150	9000
V24/V53	(X2)	20	22	490	10780
50	2	12,5	8	185	1480
50	3	16	8	455	3640
50	4	16	184	159	28920
V26/V55	(X2)	8	4	444	1776
50	2	10	4	442	1768
50	2	11	4	111	522
50	3	5	4	130	520
V27/V56	(X2)	12,5	4	873	3492
50	2	8	6	845	5070
50	3	6	90	170	13500
V28/V57	(X2)	12,5	5	125	500
50	2	12,5	4	348	1392
50	2	12,5	4	418	1672
50	4	6,3	56	155	8680
V5/V54	(X2)	16	4	475	1900
50	2	16	4	234	936
50	2	16	1	4	16
50	4	12,5	6	688	4128
50	4	12,5	6	305	1830
50	6	8	52	155	8060
V13/V45	(X2)	16	1	278	1112
50	2	16	4	595	2380
50	3	16	2	240	480
50	4	16	2	430	860
50	4	16	2	430	860
50	6	16	790	4740	16380
V19/V48	(X2)	8	4	387	1548
50	2	8	4	335	1340
50	3	16	6	519	3114
50	4	5	22	290	6380
50	6	5	48	143	6864
Peso Total	50 =			124 kg	2763 kg

RESUMO AÇO CA 50-60			
ACO	BIT	COMPR	PESO
(mm)	(m)	(kg)	(kg)
60	776	124	
5	63	776	22
50	115	425	4,25
50	10	40	25
50	12,5	323	323
50	16	607	972
50	19	187	480
60			150



R. Curstino Amargante, 988, Dique de Coxins, Curitiba / MT., CEP: 78045-330
 fone / fax: (65) 3322-7065 aquilino@quadruprojetos.com
 www.quadruprojetos.com

PROJETO EXECUTIVO
 PROJETO DE ESTRUTURA DE CONCRETO ARMADO

Proprietário: UNIRIO - UNIVERSIDADE FEDERAL DO ESTADO DO RIO DE JANEIRO
 Local: AV. PAULSTER 458, URCA, RIO DE JANEIRO/RJ

Arquiteto do Projeto: ANDRÉ LUIZ S RAMOS
 Engenheiro Civil, CRA 39176/RJ

Engenheiro Civil, CRA 128857/RJ